



## Using of intermediate position (accessories)

	 <b>DANGER</b>
	<p><i>This device is intended solely for the purpose in use with swivel units of F. Wagner GmbH. Consider, use and see <b>all</b> information of "Installation and Operating Instructions, Swivel Unit". Any other use or modification of the device without the written consent of the manufacturer is deemed improper.</i></p> <p><i>Modification without written agreement will lead to <b>serious injuries</b>. The manufacturer accepts no liability for resultant damage. The risk is borne solely by the operator. The device may only be put into operation when it has been ensured that all safety devices have been installed and are fully functional.</i></p>

Intermediate position units make it possible to move to a so-called intermediate position or "third position" in a range of about 90°. For example, in an application with end positions at 0° and 180° it is possible to move to the middle at 90°. The intermediate position units come in various versions, each suitable for the particular size of swivel unit and can be complemented with proximity switches and shock absorbers.

### ZWP-4-SE in use with shock absorbers

- ZWP-4-SE is delivered with a spacer and a metal ball (dia =4 mm, enclosed).
- Please mount the spacer between shock absorber nut and ZWP-4-SE, to be able to tighten the hex-nut of the shock absorber (distance between piston-rod is smaller than the hex-nut).
- If using shock absorbers of other manufacturers the enclosed ball can be pressed in the blind hole of ZWP-4-SE to affect stroke.



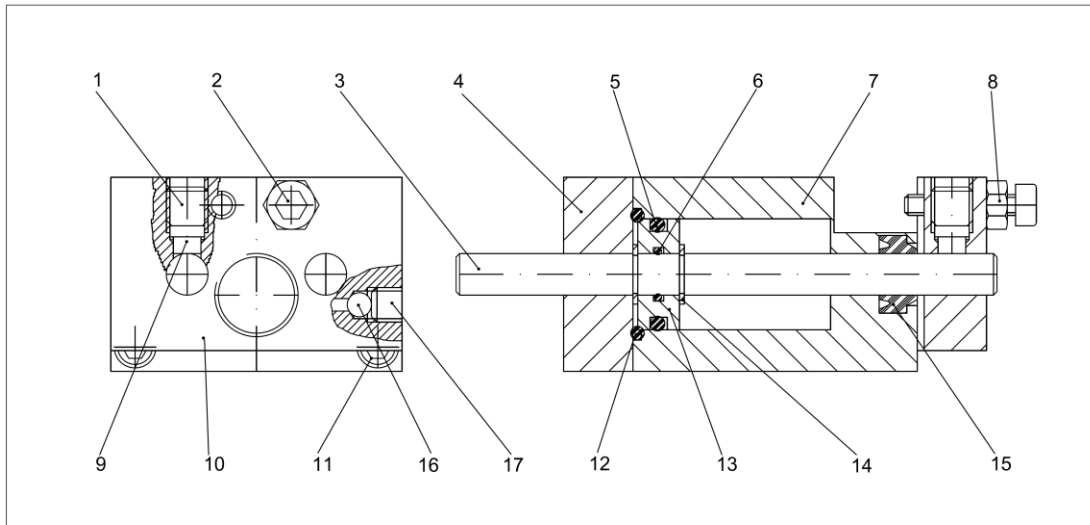
### Information for proper work of intermediate positions see **operating instructions Swivel-Unit**, chapter 5.5.1, pages 38+

- Piston adjustment acc. Table in operating instruction.
- For speed settings for the intermediate position unit use only **upstream supply air regulator**.
- For speed settings for the swivel-unit use exhaust regulators.
- Use 3/2 valves.
- ZWP-4-SE and ZWP-SE-6 cannot work against a pressurized system.
- Depending on masses use shock absorbers to avoid bouncing.

### ZWP-4-SES

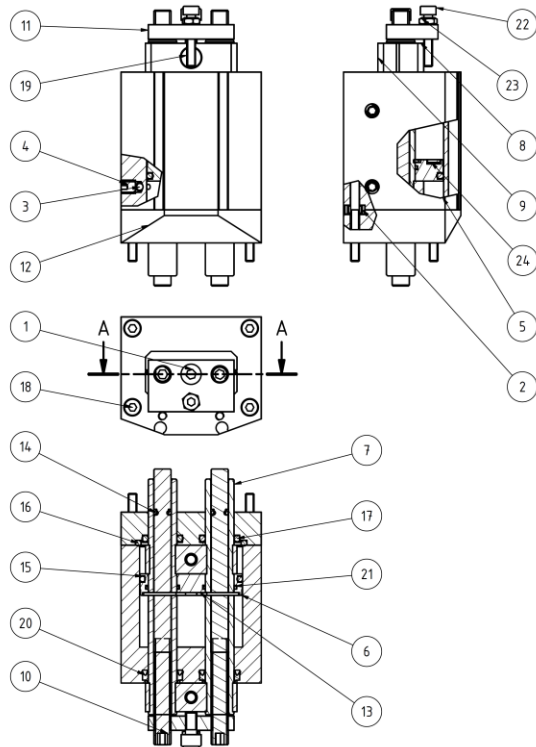
- ZWP-4-SES cannot be fitted with a hydraulic shock absorber.

**Spare-Parts-List ZWP-4-SE and ZWP-6-SE**

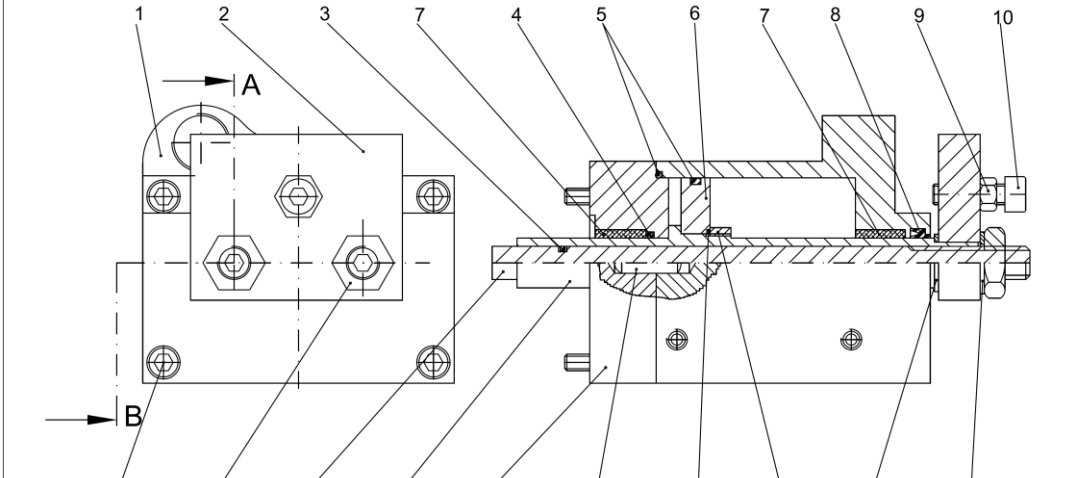


ZWP-4-SE-20-K-0-0-P				ZWP-6-SE-20-K-0-0-P			
Pos.	name	item#	pcs	Pos.	name	item#	pcs
1	grub screw with cone M8x8	6001.002	2	1	grub screw with cone M8x8	6001.008	2
2	cylinder screw M4x16	6003.019	1	2	cylinder screw M4x20	6003.005	1
3	piston rod	1815.501.101.02	2	3	piston rod	1816.501.101.02	2
4	plate	1815.502.000.02	1	4	plate	1816.502.000.02	1
5	O-ring 12x2	6210.018	2	5	O-ring 22x1.5	6210.027	2
6	O-ring 8x1	6210.047	2	6	O-ring 8x1	6210.052	2
7	housing	1815.500.101.02	1	7	housing	1816.500.101.02	1
8	nut M8	6026.002	1	8	nut M8	6026.002	1
9	pressure pad	1816.503.102	2	9	pressure pad	1816.503.102	2
10	stop plate	1815.503.101	1	10	stop plate	1816.503.101	1
11	cylinder screw M3x35	6003.034	4	11	cylinder screw M4x50	6003.008	4
12	O-ring 18x1.5	6210.026	2	12	O-ring 24.8x1.5	6210.028	2
13	piston	1815.501.102	2	13	piston	1816.501.102	2
14	locking washer 05	6033.001	4	14	locking washer 06	6033.002	4
15	combine element 6x14.2	6216.006	2	15	combine element 8x14.2	6216.005	2
16	ball 3/4	6035.003	1	16	ball 3/4	6035.003	1
17	grub screw with cone M5x5	6001.004	1	17	grub screw with cone M5x5	6001.004	1

**Spare-Parts-List ZWP-4-SES**



object	qty	item no	description
1	1	6003.002	cylinder screw DIN 912 - M4 x 8
2	4	1805.000.103	center ring ZR-4
3	2	6035.002	ball 3 Sf
4	2	6001.004	threaded pin DIN 913 - M5 x 5
5	1	1819.600.101	housing ZWP-SES-4
6	1	1819.602.101	piston
7	2	1819.602.102	piston rod ZWP-SES-4
8	2	1819.602.104	clamping piece top ZWP-SES-4
9	2	1819.602.105	clamping piece bottom ZWP-SES-4
10	2	1819.602.103	stop-screw ZWP-SES-4
11	1	1819.000.101	counterplate ZWP-SES-4
12	1	1819.601.101	intermediate plate
13	2	6030.001	locking ring for shafts DIN 471 - 10x1
14	2	6210.064	O-ring 3x1,5 NBR
15	1	6210.088	O-ring 30x2 NBR
16	1	6210.083	O-ring-35x2 NBR
17	2	6210.089	O-ring 10x2,2 Viton
18	4	6003.025	cylinder screw DIN 912 - M3 x 40
19	2	6003.012	cylinder screw DIN 912 - M4 x 12
20	2	6216.025	wiping seal 10x14x3,7 PU
21	2	6210.049	O-ring 10x1 NBR
22	1	6003.048	cylinder screw DIN 912 - M3 x 18
23	1	6025.001	hex-nut DIN 934 - M3
24	2	7000.086	magnet 8x1 Neodym

**Spare-Parts-List ZWP-6-SES / ZWP-9-SE / ZWP-9-SES**


ZWP-6-SES-20-K-0-0-P			ZWP-9-SE-20-K-0-0-P			ZWP-9-SES-10-K-0-0-P					
Pos.	name	Item#	pcs	Pos.	name	Item#	pcs	Pos.	name	Item#	pcs
1	housing	1838.000.101	1	1	housing	1838.000.101	1	1	housing	1840.000.101	1
2	stop plate	1838.000.106	1	2	stop plate	1838.000.106	1	2	stop plate	1840.000.106	1
3	O-ring 5x1,5	8210.051	2	3	O-Ring 5x1,5	8210.051	2	3	O-ring 5x1,5	8210.051	2
4	O-ring 12x2	8210.018	2	4	O-Ring 12x2	8210.018	2	4	O-ring 14x2	8210.051	2
5	O-ring 45x2,5	8210.070	2	5	O-Ring 57x3	8210.089	2	5	O-ring 70x3	8210.073	2
6	piston	1838.000.104	1	6	piston	1838.000.104	1	6	piston	1840.000.104	1
7	plain bearing 12x16x12	8200.020	4	7	plain bearing 12x16x12	8200.020	4	7	plain bearing 14x18x10	8200.022	4
8	combine element 12x5	8216.010	2	8	combine element 12x5	8216.010	2	8	combine element 14x5	8216.011	2
9	hex nut M5	8025.003	1	9	hex nut M5	8025.003	1	9	hex nut M5	8025.003	1
10	cyl. screw M5x16	8003.049	1	10	cyl. screw M5x16	8003.049	1	10	cyl. screw M5x16	8003.048	1
11	cyl. screw M4x70	8003.055	4	11	cyl. screw M5x70	8003.058	4	11	cyl. screw M5x90	8003.056	4
12	hex nut M5x14	8027.004	2	12	hex nut M5x14	8027.004	2	12	hex nut M10x15	8027.001	2
13	stop screw	1838.000.105	2	13	stop screw	1838.000.105	2	13	stop screw	1840.000.105	2
14	piston rod	1838.000.103	2	14	piston rod	1838.000.103	2	14	piston rod	1840.000.103	2
15	intermediate plate	1838.000.102	1	15	intermediate plate	1838.000.102	1	15	intermediate plate	1840.000.102	1
16	pin 5x16	8040.034	2	16	pin 5x16	8040.034	2	16	pin 6x16	8040.025	2
17	O-ring 13x1	8210.055	2	17	O-Ring 13x1	8210.055	2	17	O-ring 16x1,25	8210.015	2
18	hex nut M14x15	8026.006	2	18	hex nut M14x15	8026.006	2	18	hex nut M16x1,5	8026.007	2
19	fitting spacer 10x16x1	8020.015	2	19	fitting spacer 10x16x1	8020.015	2	19	fitting washer 12x18x1	8020.015	2
20	spacer M8	8020.011	2	20	spacer M8	8020.011	2	20	spacer M10	8020.015	2

Friedemann Wagner GmbH  
Robert-Bosch-Straße 5  
D-78559 Gosheim / Germany

Telefon: +49 (0) 7426 / 94900-0  
Telefax: +49 (0) 7426 / 94900-9  
Internet: <http://www.wagnerautomation.de>  
Email: [info@wagnerautomation.de](mailto:info@wagnerautomation.de)